

ASTRAGAL MODIFICATION TEMPLATE

QTY.: _____



— AVOID ERRORS BY BEING CAREFUL NOW.
— PLEASE COMPLETE ALL STEPS FROM 1 TO 7.

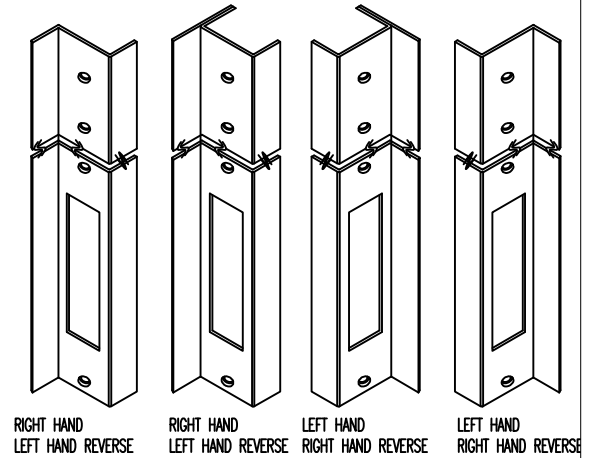
STEP 1: SELECT TYPE: LARSEN PRODUCT # IF KNOWN: _____

OR DOUBLE GUARD WITH ASTRAGAL Z-ASTRAGAL

STEP 2: SELECT LENGTH: 79.16 85.097 CUSTOM: _____

83.118 94.992
 83.771 118.740

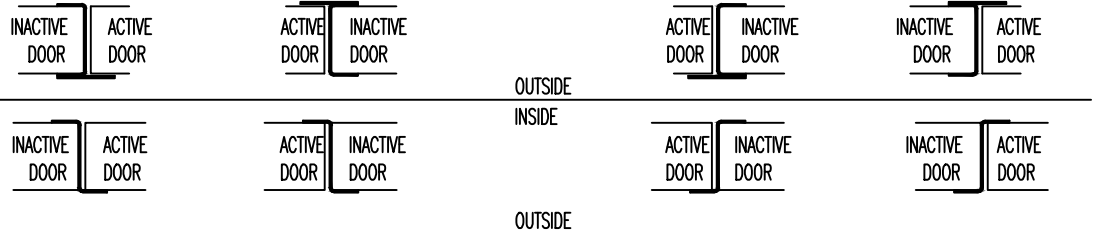
STEP 3: SELECT DOOR THICKNESS: STANDARD (1 3/4") CUSTOM: _____



STEP 4: HANDING OF DOORS: RIGHT HAND LEFT HAND REVERSE

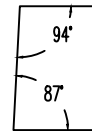
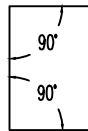
(ALWAYS VIEWED FROM THE OUTSIDE)

LEFT HAND RIGHT HAND REVERSE



STEP 5: SELECT SHAPE:

SQUARE EDGE BEVEL EDGE



STEP 6: HARDWARE CUTOUT DIMENSIONS:

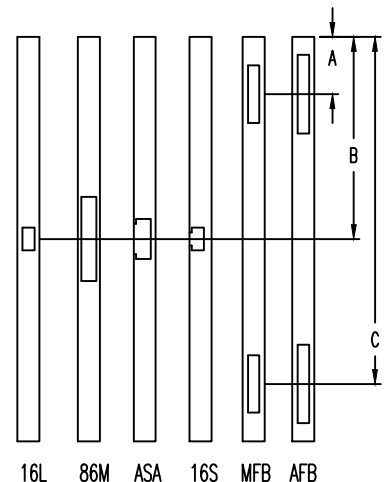
- NO CUTOUT REQUIRED
- CUTOUT REQUIRED:

DOOR MFG. NAME: _____ WE WILL LOCATE HARDWARE CUTOUTS TO MATCH.

OR CUSTOM:

- LSO BLANK _____
- 16L 161 LATCH 1-1/8" X 2-1/4" _____
- 86M 86 MORTISE LOCK 1-1/4" X 8" _____
- ASA ASA STRIKE 1-1/4" X 4-7/8" _____
- 16S 161 STRIKE 1-1/8" X 2-3/4" _____
- MFB MANUAL FLUSH BOLTS (2) 1" X 6-3/4" _____
- AFB AUTOMATIC FLUSH BOLTS (2) 1" X 8-1/2" _____

DIM. A	DIM. B	DIM. C
_____	_____	_____
_____	_____	_____
_____	_____	_____
_____	_____	_____
_____	_____	_____
_____	_____	_____
_____	_____	_____



STEP 7: HOLE SIZE & LOCATION: STANDARD: ALL ASTRAGALS HAVE HOLES TO MOUNT WITH # 10 SCREWS. HOLES ARE LOCATED APPROXIMATELY 3" FROM EACH END, 3" FROM EACH CUTOUT, AND REMAINING HOLES NOT TO EXCEED 12" ON CENTRE.

OR CUSTOM: SPECIFY HOLE SIZE AND LOCATION: _____

I APPROVE THE DESIGN AND DIMENSIONS AS SHOWN ON THIS TEMPLATE, AND I AUTHORIZE FABRICATION OF THESE PARTS.

FULL NAME: _____

SIGNED BY: _____

P.O. #: _____

COMPANY NAME: _____

DATE: _____

S.O. #: _____